

Fair working
conditions in
childcare

5 June

12:30 - 13:30

Online

CARE4CARE POLICY SERIES

FRIEDRICH
EBERT
STIFTUNG

EPSU
EUROPEAN PUBLIC SERVICE UNION

FEPS
FOUNDATION FOR EUROPEAN
PROGRESSIVE STUDIES



Welcome

Laetitia Thissen

FEPS Senior Policy Analyst on Gender Equality

POLICY STUDY
March 2023

THE EUROPEAN CARE STRATEGY A CHANCE TO ENSURE INCLUSIVE CARE FOR ALL?

Laetitia Thissen & Agnes Moch (Editors), Cecilia Navarra, Meenakshi Fernandes, Chiara Saraceno, Anna Gramada, Tuscany Bell, Claire Marzo, Jean-François Lebrun, Barbara Helfferich, Elisa Chierigato, Florian Sanden



ENSURING UNIVERSAL ACCESS TO CHILDCARE

Based on FEPS-FES Policy Study ([link](#))

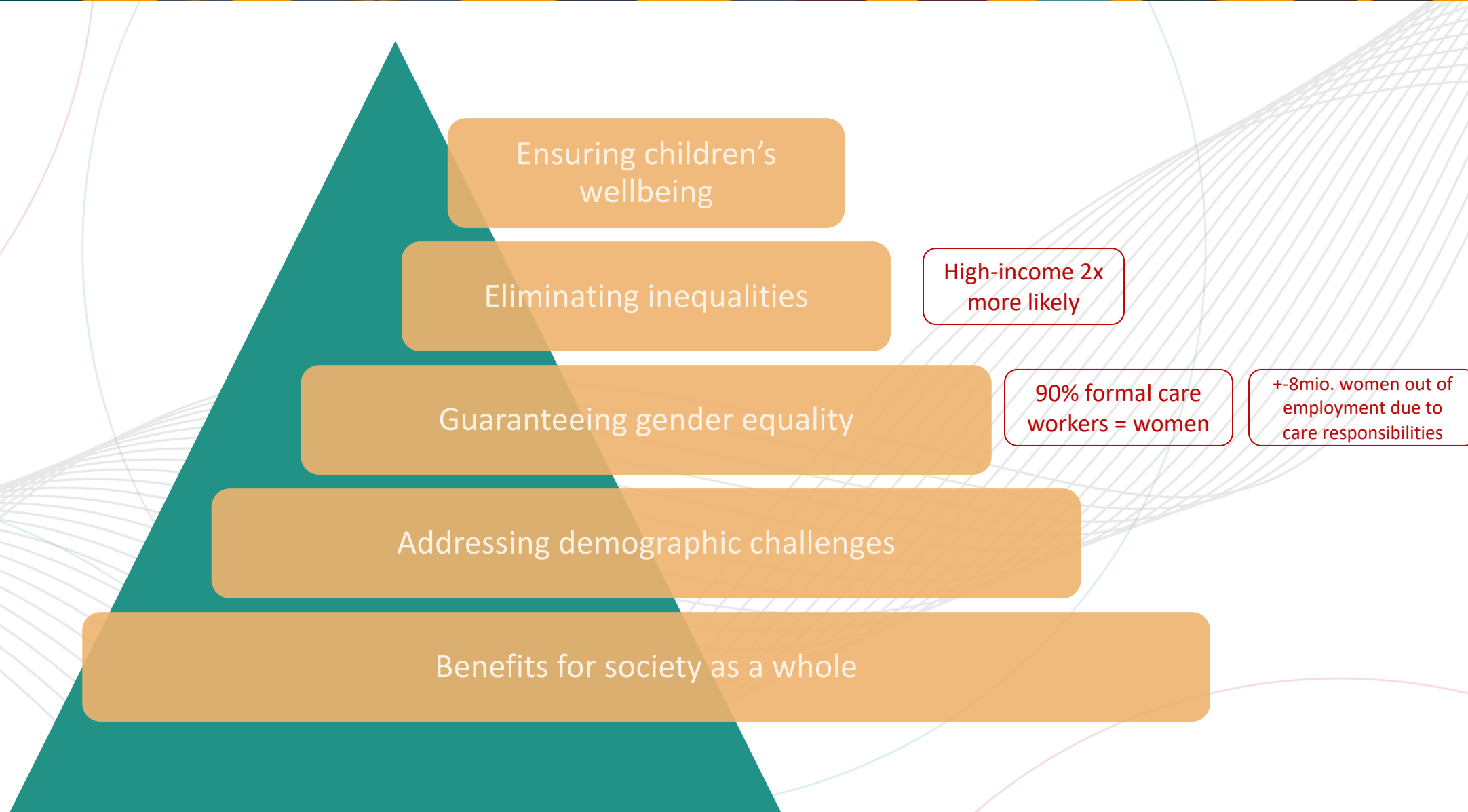
“The European Care Strategy: A chance to ensure
inclusive care for all?”

Laetitia Thissen, FEPS Senior Policy Analyst on Gender Equality

 @LaeThissen

 laetitia.thissen@feps-eurpe.eu

Why doing it?

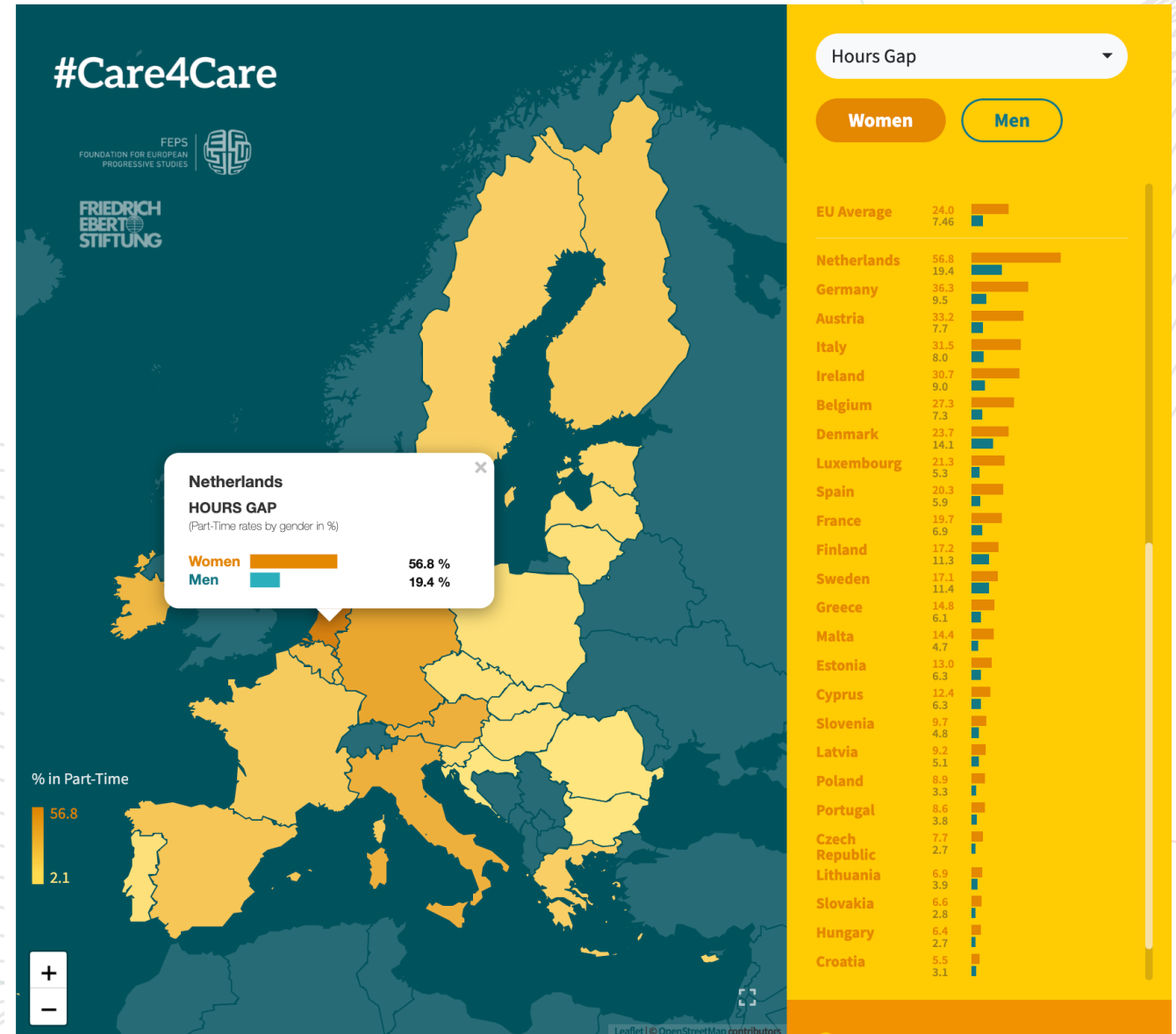


Access

In most countries, access **does not start until the child is three years old.**

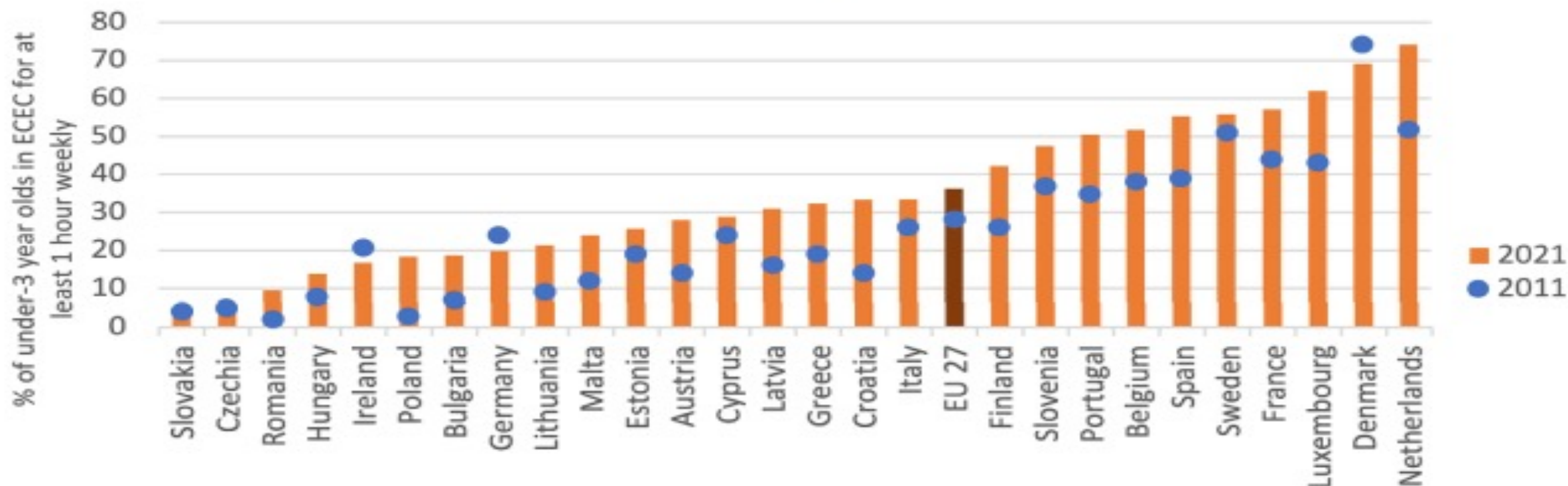
Access averages 25 hours weekly and is **incompatible with full-time employment.** This has a direct impact on women's **lower employment** and **higher part-time work rates.**

→ FEPS-FES EU Care Atlas ([link](#))



Enrollment

**Figure 4 - Over the past decade,
the use of childcare increased by almost a third**
ECEC enrolment of under three-year-olds in 2011 and 2021



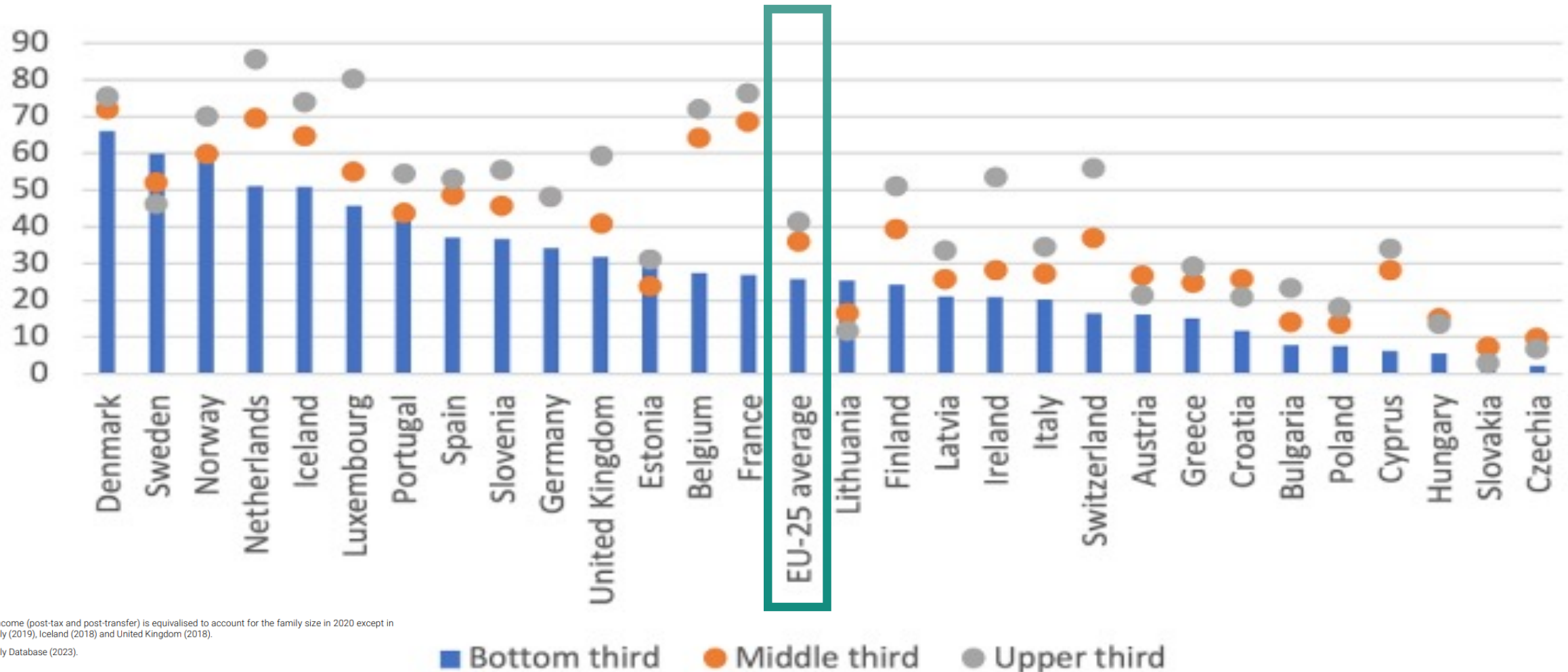
Notes: In 2021, the enrolment reflected various Covid-restrictions. For example, in Germany, enrolment rose from 24% (2011) to 31% (2019) and then fell to 16% (2020) and 20% (2021).

Source: Eurostat 2021 (apart from Slovakia – 2020)

Enrollment

Figure 5 - Families of means are twice as likely to use childcare for under 3-year olds

ECEC participation of children under three, by income level, in 2020



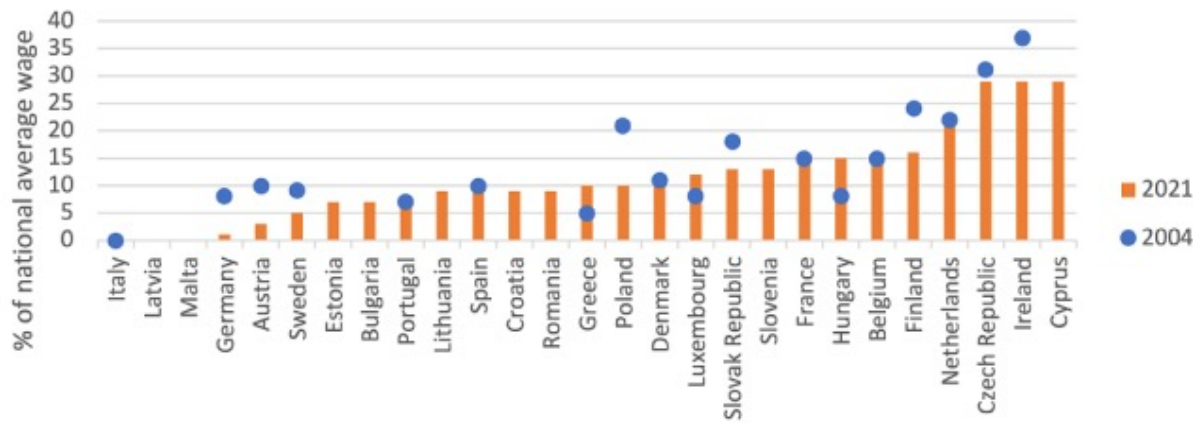
Note: Disposable income (post-tax and post-transfer) is equivalised to account for the family size in 2020 except in Germany (2019), Italy (2019), Iceland (2018) and United Kingdom (2018).

Source: OECD Family Database (2023).

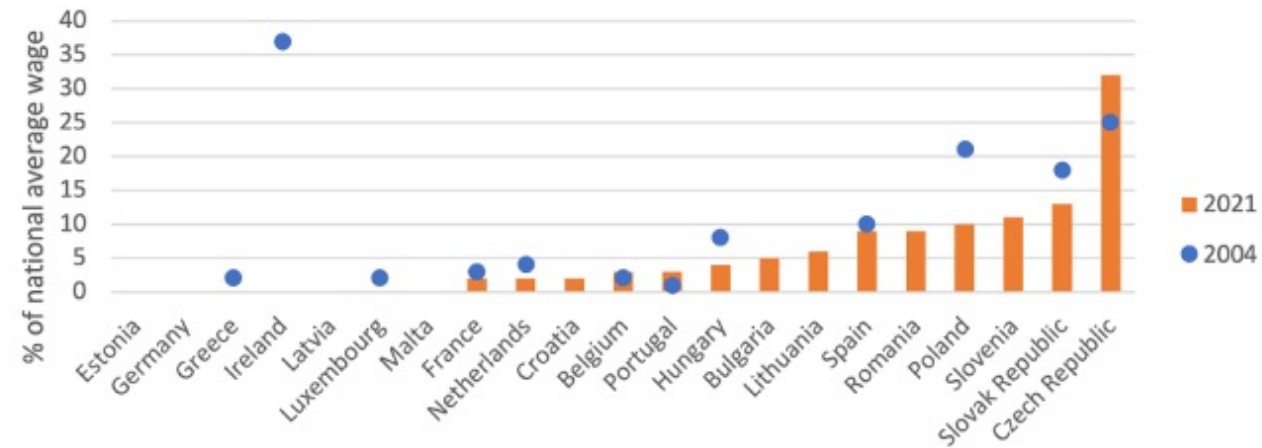
Affordability

Figure 6 - In the 21st century, childcare has become more affordable, especially for single parents
 % of the average wage that two types of households spend on childcare for two in 2004 and 2021

Two earners on middle income



Single parent on low income

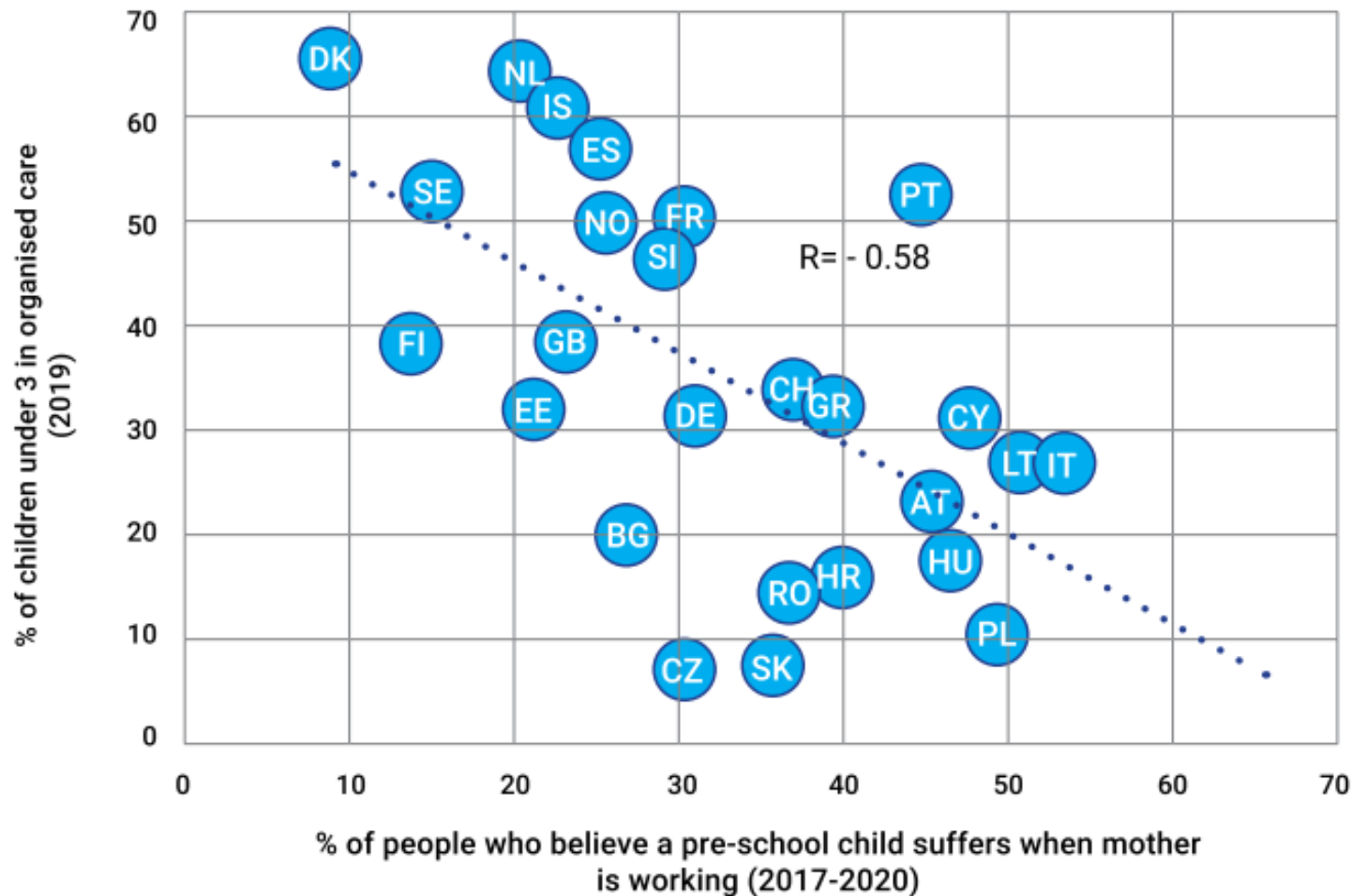


Note: The simulation is run for two types of households with two children in full-time childcare after social assistance benefits: 1) a household of two earners, each earning the national average wage, 2) a household run by a single parent on a national minimum wage.

Source: Calculated using the data extracted on 06 Dec 2022 from OECD.Stat

Quality

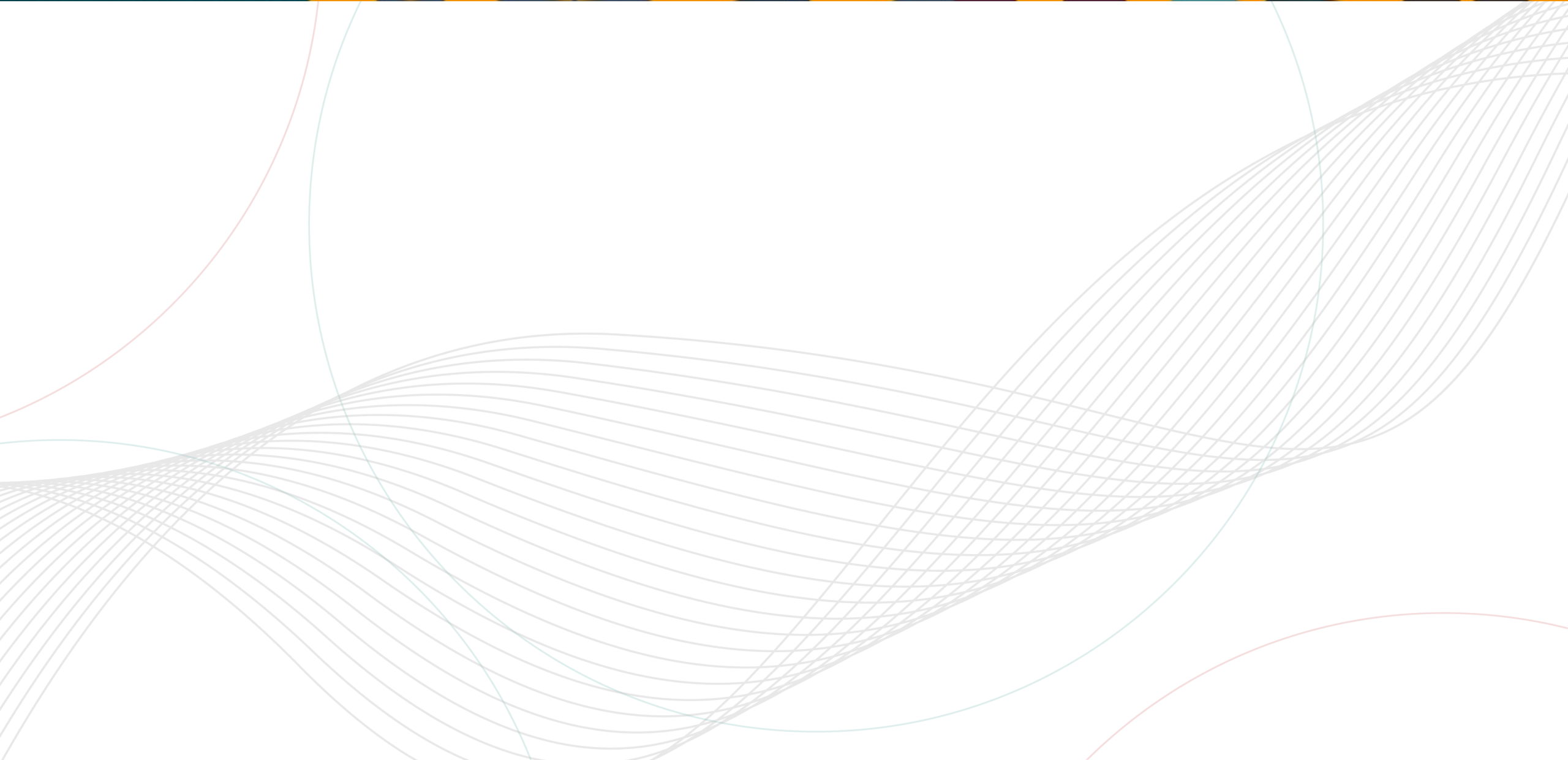
Figure 7 - Enrolment reflects cultural views about the needs of children and the role of women
% of people who believe a preschool child suffers when
the mother is working and enrolment of children under three



Note: % of people who believe a preschool child suffers when mother is working is a sum of responses 'strongly agree' and 'agree'.

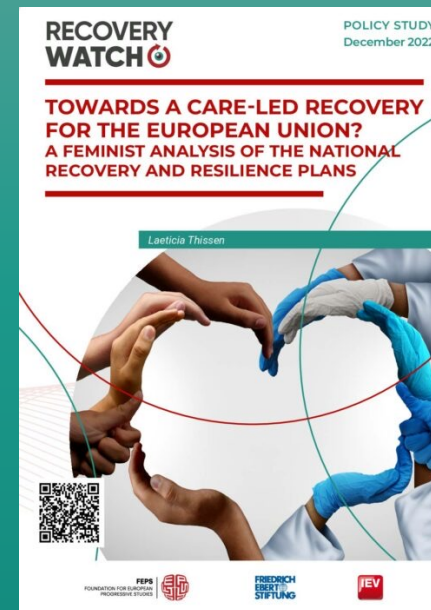
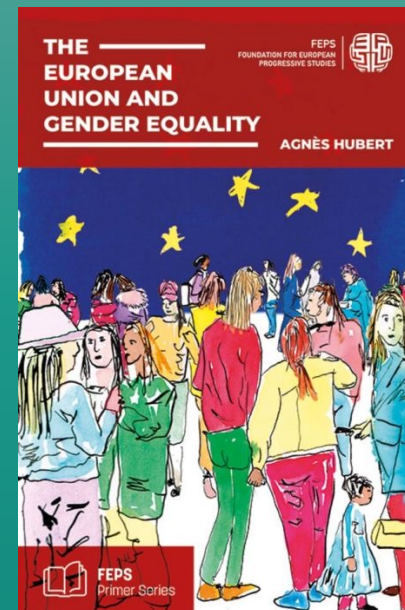
Source: Gromada, Anna, and Richardson, Dominic, Where do rich countries stand on childcare?, UNICEF Office of Research – Innocenti, Florence, 2021, based on Eurostat (2019) and World Value Survey wave 7 (2017-2020).

Recommendations



Thank you !

Find out more about the policy study here and other publications on care here:
<https://feps-europe.eu/>



Laeticia Thissen, FEPS Senior Policy Analyst on Gender Equality



@LaeThissen |



laeticia.thissen@feps-europe.eu

Discussion

- **Christian Morabito**, International Researcher and Expert in the field of inequalities in ECEC
- **Leena Kaasinen**, Finnish Union of Practical Nurses, SuPer
- **Rainer Winter**, Head of the EU Liaison Office of Burgenland

Moderation by **Paola Panzeri**, Policy Staff on gender equality, local and regional governments, EPSU

Closing

Thank you and see you
on 19/06 !



CARE4CARE POLICY SERIES

ONLINE 12:30 - 13:30

- 5 JUNE** Fair working conditions in childcare
- 19 JUNE** The future of care: platform work & digitalisation
- 6 SEPT** Care as a driver for wellbeing
- 10 OCT** Enhancing sustainable long-term care